



THE
Northern
Sydney
Institute
Part of **TAFE**^{NSW}

Your Career Profile

First Name: Sam

Last Name: Sample

Date: 9 May 2014, 15:34



Great work! You are a Driver Analyser.



Driver Analysers are results-oriented as well as accurate and precise. This combination is powerful and inventive.

Unlocking your potential

Congratulations! You've taken the first step by completing Your Career Profile report. You're taking control of your future.

Once you have a better understanding of your personality style you'll be one step closer to unlocking and realising your potential in a career that's the right fit for you.

And you're not settling for a career that's just OK – you're going for great, right?

You know what else will be great? A meaningful career will unlock potential in all areas of your life – giving you confidence, financial security, and a more balanced life overall.

How to read Your Career Profile report

Your personalised Career Profile report will tell you:

- All about yourself. We'll outline the characteristics of a Driver Analyser.
- Career choices that match your talents.
- How to get equipped with skills and qualifications for your dream career.
- Where to find help to get your career started.

The Northern Sydney Institute can help

At the Northern Sydney Institute our vision is to help people just like you unlock their career potential. Here's how:

- Our Institute offers nationally recognised courses from certificate to bachelor degree and everything in between.
- From full-time to part-time, online or face-to-face, we offer flexible programs to suit your needs.
- Whether you are just starting out in your career, returning to work after a break, looking to win that next promotion or building on your existing skills, we've got it covered.
- We are a team of more than 1,000 people who wake up each morning with a thirst to educate, train and inspire. We're here to make those dreams happen.

Add to your resume



You'll discover some valuable insights about yourself. So add them to your resume!

When you see this icon we recommend including it in your resume.

Four Personality Styles

MyCareerMatch uses four style identifiers, **(D) DRIVER, (P) PROMOTER, (S) SUPPORTER and (A) ANALYSER**. When blended together in varying percentages, these four personality styles make us who we are.

Driver



Drivers are Adventurers – strong-willed, practical and decisive. They are action-oriented and results-driven. Drivers like to lead and win every challenge.

Promoter



Promoters are Socialisers – outgoing, fun and charming. They are great communicators who inspire others with their imagination.

Supporter



Supporters are Helpers – kind, dependable, and practical. They are easy to get along with and enjoy helping people.

Analysers



Analysers are Thinkers – great with facts and numbers. They are well-organised, strive for accuracy and pay attention to details.

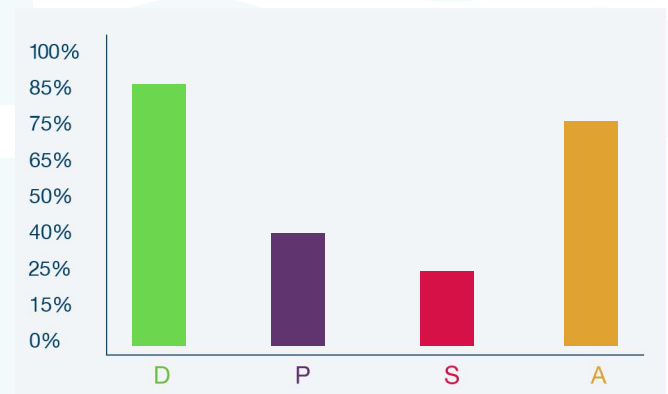
Congratulations! Your personality style is:

Dominant style	Backup style
Driver	Analysers

There is no right or wrong style, and one style is not better than another. The way you like to do things may not be the same as others. This doesn't make them better or worse, just different.

All styles can succeed or fail. What's important is what you do with your talents and the skills and education you receive. Does your style match your current job?

Our research tells us the closer your personality style matches your job – the happier, more productive and less stressed you will be. Does that sound like you? Or is it time to consider an alternative career path? Read on to discover the possibilities.



People are a blend of all four styles and each style has its own level of strength. This graph indicates how strongly each style influences your personality. The highest is your **Dominant** style. This is the one that governs how you behave most of the time.

The second highest is your **Backup** style. It's like your co-pilot and kicks in when there's a need for balance and sound decision making. When styles are of equal percentage the order to determine your style is D, P, S then A.

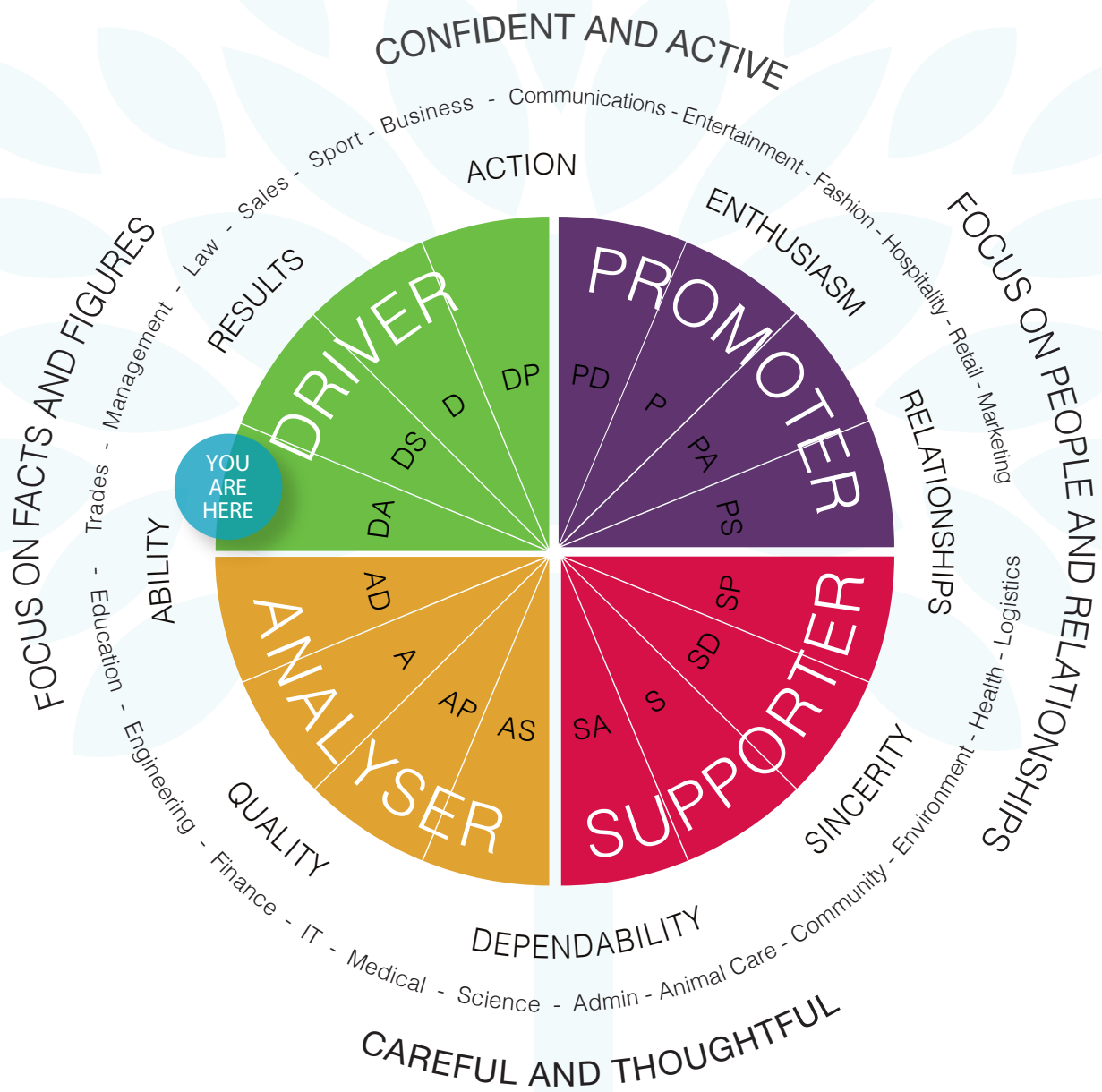


Your career personality map

The map is divided into the four MyCareerMatch styles, DRIVER / PROMOTER / SUPPORTER / ANALYSER and combinations of each style (DA, DP, DS etc.).

Your style is Driver Analyser.

The outer circle represents 'what you focus on' and 'how you approach life'.



OK so I'm a Driver Analyser



Driver Analysers are task oriented and prefer action rather than talking.

Driver Analyser types tend to look towards the future. You also tend to think differently, more creatively. This keeps you motivated and focused. Boredom and repetition are your worst nightmare. Failure is not an option. You don't like being criticised or your work questioned, and you may give a sharp response to those who dare challenge you.

Driver Analysers are often instrumental in change. With perfectionist tendencies, you are a talented planner. You are able to analyse and solve problems. You do it your way and will often arrive at a solution that has been untested. You enjoy constantly looking for new ideas and might even keep a pen and paper by your bed in case you wake up with an idea or you may keep them in your car to record thoughts as you travel. A voice memo recorder is often a Driver Analyser's essential tool.

Driver Analysers want to achieve results that are precise, accurate and detailed. You excel when the responsibility to act independently has been provided. This is particularly true in situations where the job requires detailed technical knowledge.

Driver Analysers are highly intelligent and provided sufficient time is allowed, you will complete projects accurately and thoroughly. A Driver Analyser will pursue all possible avenues to arrive at a solution. You enjoy solving problems, especially in situations where others have tried and failed.

Words that describe you



Inventive, creative, demanding, assertive, forward thinking, forceful, reserved, thoughtful, logical, active, alert, tangible results, direct, self-starter, systematic, precise, accurate and perfectionist.

What people say about you



- You are a determined person
- You have confidence in yourself
- You aren't easily side-tracked
- You are able to handle things on your own
- You are committed and decisive
- You are independent and capable
- You know what you want and go after it
- You like to get results when you do things
- You have a lot of drive
- You have a strong will
- You are upfront with people
- You have high standards
- You always try to do your best work
- You like things to be organised
- You want to understand all you can about what you are planning
- You do things in a logical way
- You like to think about things and then decide
- You are a trustworthy person

Your ideal job environment



Driver Analysers thrive in a workplace where:

- Quality and standards are important
- Relationships skills are not required
- There are challenges and rewards
- Tasks can be broken down into measurable components
- Technical, task-oriented work is required
- You can delegate and manage
- You have freedom from control and supervision
- You can make decisions

What you bring to the job



- **Being a creative thinker** – You make a difference by being a visionary, a ‘future-oriented’ person who doesn’t look back. You are good at developing plans, schemes and concepts, sometimes the bigger the better.
- **Giving expert advice** – Even though you like to be in control and want things done your way, you’re a quick learner and value advice either when giving or receiving.
- **Getting it done on time** – You are realistic and strive for results such as getting things done on time, or saving money or figuring out how to be more productive.
- **Looking at the big picture** – You prefer to work with the big picture, the big idea, rather than get into the detail of it all. Your visionary approach lets you see how everything relates to each other and where problems may arise.
- **Setting high standards** – You make a difference by encouraging others to be the best they can be and not to expect anything less than success.
- **Solving problems** – You are a natural and gifted problem solver. You make a difference by being able to get to the core of a problem and provide solutions that work.
- **Taking charge** – Your leadership skills compel you to take charge and be in control. Your self-confidence and leadership qualities encourage others to follow and support you.

Your top 5 industries and recommendations

Finding a career that you are passionate about, that matches who you are, and that you love – this should be your goal.

 Click the industry icon to view career information.



Accounting & Finance Industry



Building Industry



Information Technology Industry



Engineering Industry



Electrotechnology Industry



Accounting & Finance Industry

What it's about:

Accounting and finance is an industry on the rise. Growth of 4% per annum is expected over the next five years, with a projection of 50,000 job openings for accountants. A potential career in accounting and finance may include auditing, merchant banking, financial planning and taxation, stockbroking and management consulting.



Suggested careers in the Industry (Click each one to see what programs are available)

Accountant	Accounts	Payroll Clerk
Accounts Clerk	Receivable	Registered
Accounts Payable	Bookkeeper	BAS Agent
	Financial Planner	



Want to know more? Click on the industry icon above or on the Career Guide icon here

Building Industry

What it's about:

Construction is the third largest employment industry in Australia, with jobs in this sector predicted to reach 1.09 million in 352,500 locations by 2019. Whether you work in the domestic or corporate sector, you will have a sought-after set of skills building, plumbing, renovating and maintaining homes and businesses.

Suggested careers in the Industry (Click each one to see what programs are available)

Backflow Tester	Carpenter	Plumbing
Builder	Cleaner	Contractor
Building	Home	Plumbing
Building And Construction	Sustainability Assessor	Supervisor
Building Designer	Plumber	Waste Management



Want to know more?
 Click on the industry icon above or on the Career Guide icon here

Information Technology Industry

What it's about:

More than half a million people work in Information Technology (IT) occupations. Now, more than ever, information technology is embedded in all aspects of today's world. Across all industries and in our personal lives, IT is there, every day, everywhere.

Suggested careers in the Industry (Click each one to see what programs are available)

Computer Engineer	Computer Technician	Mobile Games Programmer	Programmer
Computer Security Specialist	Customer Support Information Systems Manager	Network Administrator	Systems Administrator
		Network Security Administrator	Systems Analyst
			Web Developer



Want to know more?
 Click on the industry icon above or on the Career Guide icon here

Engineering Industry

What it's about:

The manufacturing and engineering industry is the second largest employer in Australia and amongst the top 20 paying industries. A diverse industry, careers may include mechanical engineering technician, fitter and turner, welder, process worker.

Suggested careers in the Industry (Click each one to see what programs are available)

Advanced Engineering Tradesperson	C7 Level Engineering Tradesperson	Tradesperson
Building	Computer Engineer	Mechanic
C10 Level Mechanical Tradesperson	Drafting Engineering	Mechanical Engineer
		Metal Fabrication Tradesperson
		Project Engineer



Want to know more?
 Click on the industry icon above or on the Career Guide icon here

Electrotechnology Industry

What it's about:

Electrotechnology and telecommunications is a multibillion-dollar industry in Australia that impacts on almost every aspect of daily life. People in this industry install, service, repair and maintain electrical and electronic equipment for industrial, commercial and domestic purposes.

Suggested careers in the Industry (Click each one to see what programs are available)

Computer Assembly	Electrical Fitter	Electrotechnology Traineeship	Special Class Electrician
Computer Repairs	Electrician	Engineer Installation	Split Air-Conditioning Systems Installer
Data Cabling	Electrotechnology Apprenticeship		



Want to know more?
 Click on the industry icon above or on the Career Guide icon here

So how do you get there?



You now understand who you are and what you're naturally good at, and you've had a glimpse of some career options that best match your personality style.

Now you need to find some inspiring learning pathways to equip you for that dream job.

The Northern Sydney Institute provides inspiring and life-changing education and training programs that are closely linked to the industries in which you'd like to move.

We have seven campuses conveniently located across the northern metropolitan region of Sydney.

Each campus has its own profile of courses with world-class learning facilities and specialist training centres.

We've helped by carefully selecting a range of courses that match your Analyser strengths and prepare you for the next steps in your journey.

We have over 500 programs available ranging from hair and beauty to network engineering. Our programs are delivered online, face-to-face or onsite for workplaces. And you'll find we provide programs for apprentices, trainees through to higher education degree students.

So whatever your level of education and experience we can help you achieve your goals.

What's next?

Need help choosing the right path? Our friendly team of Career Coaches can help you with practical, expert advice on how you can get there – we're just a phone call away.

Our Career Coaches can help you with:

- Exploring your options
- Planning an individual education and career pathway to achieve your goals
- Other questions or concerns relating to your study

The Northern Sydney Institute is part of TAFE NSW and has free and professional educational, personal and career development services available to help you.

Call us today on 131 674.

CareersConnect

CareersConnect is an online job vacancy and employment information service that is free for the Northern Sydney Institute students and graduates.

Whether you are looking for a career in your chosen industry or perhaps a part-time or casual position that will assist with your study expenses, CareersConnect can assist you through the job search and application writing process.

This is just another service provided to make dreams happen for our students and graduates.

Click here for more information

Your Career Report

Thank you for completing your career personality survey. We trust this report helped you identify your strengths and talents, and the careers that best match your personality style.

Your Career Report is based entirely on your answers to the survey and is intended as general information about you and to help you choose a career and the courses that match. MyCareerMatch makes no warranties, express or implied about the accuracy or reliability of this report. For personal assistance, speak with your careers adviser or a professional career counsellor. MyCareerMatch does not view or keep copies of your report. MyCareerMatch is a product of MyProfile Pty Ltd an industry leader in online assessments for careers and job matching.

All industries statistics were sourced from ABA, IBISWorld, joboutlook.gov.au and DEEWR and were accurate at the time of publication.